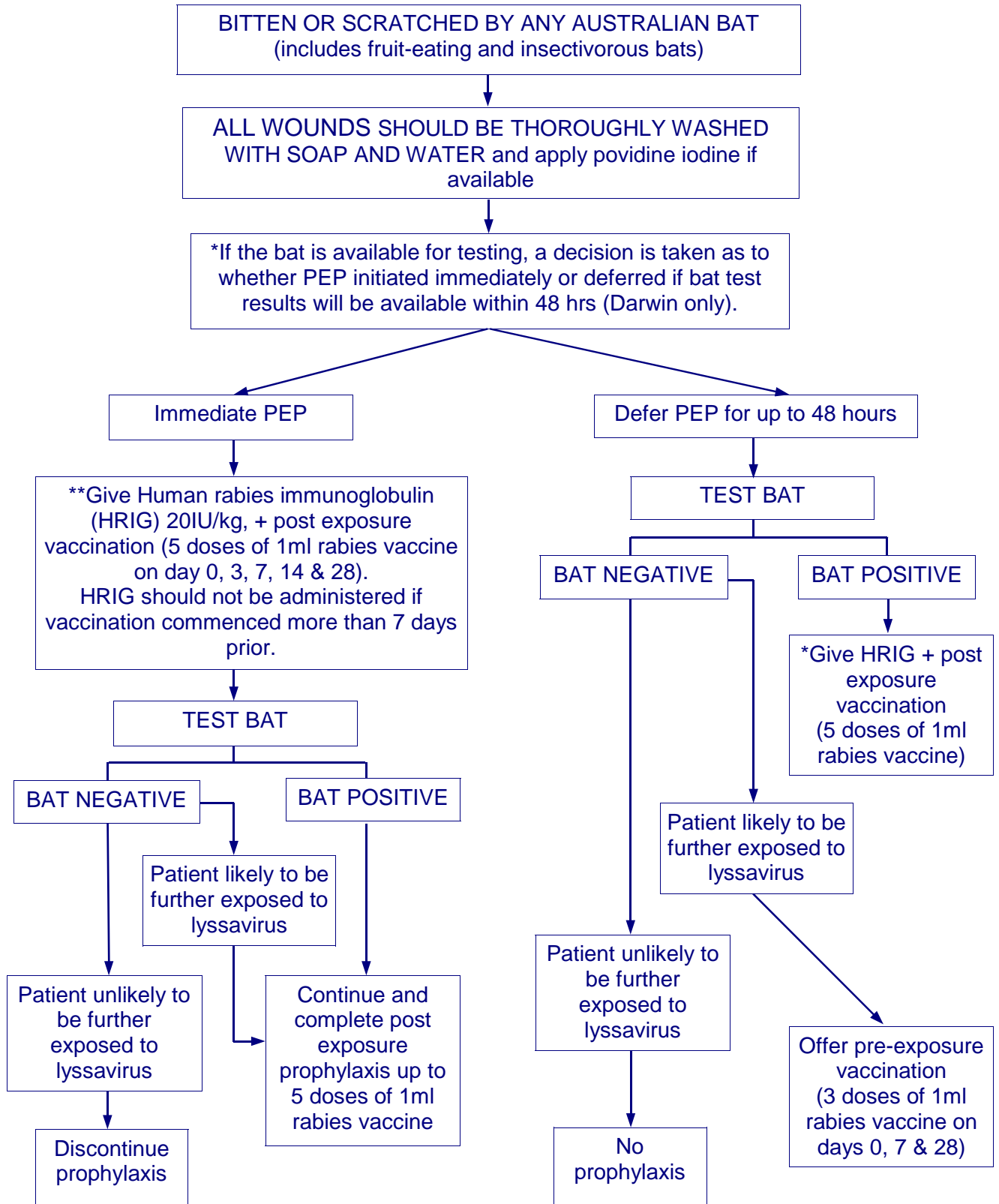




# Australian bat lyssavirus post exposure prophylaxis (PEP) flowchart



\* If the bat is available contact CDC on 89228044 or Berrimah veterinary Laboratories on 89992249 to arrange for testing of the bat..

\*\* If proven history of pre-exposure vaccination, DO NOT give rabies immunoglobulin, give 2 doses of vaccine on days 0 & 3.